

STR # 43970 / Created April 19, 2022

# Monthly STAR Report : La Quinta Inns & Suites San Antonio Airport

For the Month of: March 2022

Currency: US Dollar / Competitive Set Data Excludes Subject Property



Table Of Contents	1
Monthly Performance at a Glance	2
STAR Summary	3
Competitive Set Report	4
Response Report	5
Day of Week & Weekday/Weekend	6
Daily Data for the Month	7
Help	8

Corporate North American Headquarters  
T: +1 (615) 824 8664  
support@str.com www.str.com

International Headquarters  
T: +44 (0) 207 922 1930  
hotelinfo@str.com www.str.com

2022 © CoStar Group. This STR Report is a publication of STR, LLC and STR Global, Ltd., CoStar Group companies, and is intended solely for use by paid subscribers. The information in the STR Report is provided on an "as is" and "as available" basis and should not be construed as investment, tax, accounting or legal advice. Reproduction or distribution of this STR Report, in whole or part, without written permission is prohibited and subject to legal action. If you have received this report and are NOT a subscriber to this STR Report, please contact us immediately. Source: 2022 STR, LLC / STR Global, Ltd. trading as "STR".

## Tab 2 - Monthly Performance at a Glance - My Property vs. Competitive Set

La Quinta Inns & Suites San Antonio Airport 850 Halm Blvd San Antonio, TX 78216 Phone: (210) 342-3738  
 STR # 43970 ChainID: 53411 MgtCo: Highgate Hotels Owner: Highgate Hotels  
 For the Month of: March 2022 Date Created: April 19, 2022 Monthly Competitive Set Data Excludes Subject Property

### March 2022

	Occupancy (%)			ADR			RevPAR		
	My Prop	Comp Set	Index (MPI)	My Prop	Comp Set	Index (ARI)	My Prop	Comp Set	Index (RGI)
Current Month	70.5	79.3	89.0	106.95	119.20	89.7	75.40	94.48	79.8
Year To Date	54.4	66.5	81.8	97.18	105.42	92.2	52.89	70.09	75.5
Running 3 Month	54.4	66.5	81.8	97.18	105.42	92.2	52.89	70.09	75.5
Running 12 Month	56.5	67.3	84.0	97.55	99.15	98.4	55.16	66.73	82.7

### March 2022 vs. 2021 Percent Change (%)

	Occupancy			ADR			RevPAR		
	My Prop	Comp Set	Index (MPI)	My Prop	Comp Set	Index (ARI)	My Prop	Comp Set	Index (RGI)
Current Month	8.6	2.8	5.6	42.1	42.2	-0.1	54.3	46.2	5.5
Year To Date	19.9	11.0	8.0	37.9	39.2	-1.0	65.4	54.6	7.0
Running 3 Month	19.9	11.0	8.0	37.9	39.2	-1.0	65.4	54.6	7.0
Running 12 Month	68.0	54.3	8.8	43.0	37.0	4.3	140.2	111.5	13.6

# Tab 3 - STAR Summary - My Property vs. Comp Set and Industry Segments

La Quinta Inns & Suites San Antonio Airport 850 Halm Blvd San Antonio, TX 78216 Phone: (210) 342-3738

STR # 43970 ChainID: 53411 MgtCo: Highgate Hotels Owner: Highgate Hotels

For the Month of: March 2022 Date Created: April 19, 2022 Monthly Competitive Set Data Excludes Subject Property

	Occupancy (%)							
	Current Month	% Chg	Year to Date	% Chg	Running 3 Month	% Chg	Running 12 Month	% Chg
La Quinta Inns & Suites San Antonio Airport	70.5	8.6	54.4	19.9	54.4	19.9	56.5	68.0
Market: San Antonio, TX	72.6	12.3	60.6	21.5	60.6	21.5	61.9	51.0
Market Class: Upper Midscale Class	75.2	6.3	63.8	16.2	63.8	16.2	66.5	54.9
Submarket: San Antonio Airport, TX	75.1	2.7	64.5	13.5	64.5	13.5	66.0	44.6
Submarket Scale: Midscale Chains	72.7	-2.4	59.8	7.2	59.8	7.2	63.7	54.1
Competitive Set: Competitors	79.3	2.8	66.5	11.0	66.5	11.0	67.3	54.3

Supply			
Month % Chg	YTD % Chg	Run 3 Mon % Chg	Run 12 Mon % Chg
-6.5	-2.2	-2.2	-0.5
-1.3	-1.0	-1.0	3.0
2.1	2.1	2.1	2.6
1.1	1.1	1.1	2.3
5.1	5.1	5.1	6.0
-0.3	-0.3	-0.3	-0.1

	Average Daily Rate							
	Current Month	% Chg	Year to Date	% Chg	Running 3 Month	% Chg	Running 12 Month	% Chg
La Quinta Inns & Suites San Antonio Airport	106.95	42.1	97.18	37.9	97.18	37.9	97.55	43.0
Market: San Antonio, TX	144.60	44.8	124.88	42.6	124.88	42.6	117.92	44.2
Market Class: Upper Midscale Class	133.10	38.7	116.86	34.6	116.86	34.6	111.39	36.0
Submarket: San Antonio Airport, TX	111.63	38.1	99.07	34.9	99.07	34.9	93.28	36.0
Submarket Scale: Midscale Chains	124.13	40.4	108.78	34.8	108.78	34.8	103.42	34.4
Competitive Set: Competitors	119.20	42.2	105.42	39.2	105.42	39.2	99.15	37.0

Demand			
Month % Chg	YTD % Chg	Run 3 Mon % Chg	Run 12 Mon % Chg
1.6	17.2	17.2	67.0
10.9	20.3	20.3	55.4
8.5	18.7	18.7	59.0
3.8	14.7	14.7	48.0
2.6	12.7	12.7	63.3
2.5	10.7	10.7	54.2

	RevPAR							
	Current Month	% Chg	Year to Date	% Chg	Running 3 Month	% Chg	Running 12 Month	% Chg
La Quinta Inns & Suites San Antonio Airport	75.40	54.3	52.89	65.4	52.89	65.4	55.16	140.2
Market: San Antonio, TX	104.98	62.6	75.72	73.2	75.72	73.2	73.00	117.7
Market Class: Upper Midscale Class	100.14	47.4	74.52	56.3	74.52	56.3	74.07	110.5
Submarket: San Antonio Airport, TX	83.83	41.8	63.93	53.1	63.93	53.1	61.60	96.7
Submarket Scale: Midscale Chains	90.29	37.1	65.05	44.5	65.05	44.5	65.92	107.1
Competitive Set: Competitors	94.48	46.2	70.09	54.6	70.09	54.6	66.73	111.5

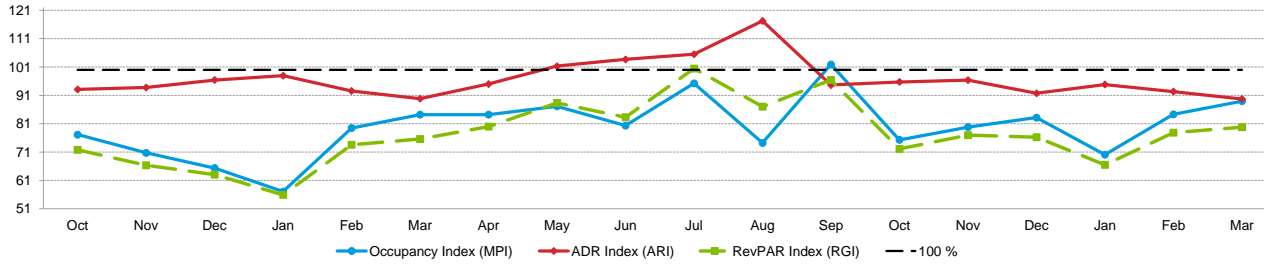
Revenue			
Month % Chg	YTD % Chg	Run 3 Mon % Chg	Run 12 Mon % Chg
44.3	61.7	61.7	138.8
60.5	71.5	71.5	124.1
50.6	59.7	59.7	116.1
43.4	54.8	54.8	101.3
44.1	51.9	51.9	119.5
45.7	54.1	54.1	111.3

	Census/Sample - Properties & Rooms				
	Census		Sample		Sample %
	Properties	Rooms	Properties	Rooms	Rooms
Market: San Antonio, TX	462	47162	337	41926	88.9
Market Class: Upper Midscale Class	125	13293	117	12913	97.1
Submarket: San Antonio Airport, TX	61	7213	52	6842	94.9
Submarket Scale: Midscale Chains	20	2419	20	2419	100.0
Competitive Set: Competitors	6	927	6	927	100.0

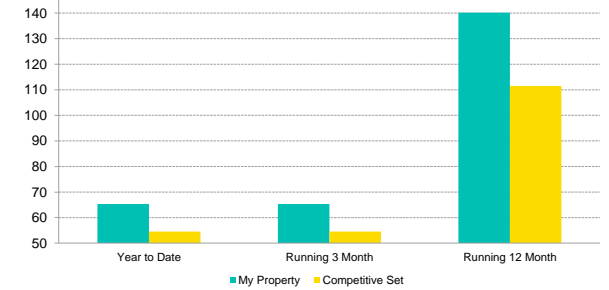
# Tab 4 - Competitive Set Report

La Quinta Inns & Suites San Antonio Airport 850 Halm Blvd San Antonio, TX 78216 Phone: (210) 342-3738  
 STR # 43970 ChainID: 53411 MgtCo: Highgate Hotels Owner: Highgate Hotels  
 For the Month of: March 2022 Date Created: April 19, 2022 Monthly Competitive Set Data Excludes Subject Property

## Monthly Indexes



## RevPAR Percent Change



Occupancy (%)	2020			2021									2022					
	Oct	Nov	Dec	Jan	Feb	Mar	Apr	May	Jun	Jul	Aug	Sep	Oct	Nov	Dec	Jan	Feb	Mar
My Property	35.8	31.6	30.2	25.6	45.6	64.9	57.8	56.9	60.4	73.5	45.7	64.3	49.7	52.8	54.2	36.4	57.7	70.5
Competitive Set	46.4	44.7	46.3	44.9	57.4	77.1	68.6	65.3	75.1	77.2	61.5	63.1	65.9	66.1	65.2	51.9	68.5	79.3
Index (MPI)	77.1	70.7	65.4	57.1	79.5	84.2	84.2	87.2	80.3	95.2	74.2	101.9	75.3	79.8	83.1	70.1	84.3	89.0
Rank	6 of 7	6 of 7	7 of 7	6 of 7	6 of 7	7 of 7	7 of 7	7 of 7	7 of 7	5 of 7	7 of 7	4 of 7	7 of 7	7 of 7	7 of 7	7 of 7	6 of 7	6 of 7

Year To Date			Running 3 Month			Running 12 Month		
2020	2021	2022	2020	2021	2022	2020	2021	2022
43.9	45.4	54.4	43.9	45.4	54.4	59.9	33.7	56.5
63.7	59.9	66.5	63.7	59.9	66.5	73.1	43.6	67.3
68.9	75.8	81.8	68.9	75.8	81.8	82.0	77.2	84.0
7 of 7	6 of 7	7 of 7	7 of 7	6 of 7	7 of 7	7 of 7	6 of 7	7 of 7

% Chg	2020			2021									2022					
	Oct	Nov	Dec	Jan	Feb	Mar	Apr	May	Jun	Jul	Aug	Sep	Oct	Nov	Dec	Jan	Feb	Mar
My Property	-42.6	-45.4	-45.1	-43.7	-26.3	155.5	432.5	173.7	54.6	126.6	33.7	92.9	38.8	66.8	79.3	42.0	26.5	8.6
Competitive Set	-40.0	-39.5	-36.7	-31.5	-28.9	65.8	360.4	149.6	86.3	99.8	54.8	33.8	42.1	47.8	41.0	15.6	19.3	2.8
Index (MPI)	-4.4	-9.8	-13.3	-17.9	3.7	54.1	15.7	9.6	-17.0	13.4	-13.7	44.2	-2.4	12.9	27.2	22.8	6.0	5.6
Rank	4 of 7	5 of 7	5 of 7	6 of 7	4 of 7	1 of 7	4 of 7	5 of 7	6 of 7	4 of 7	5 of 7	2 of 7	5 of 7	4 of 7	1 of 7	3 of 7	5 of 7	3 of 7

Year To Date			Running 3 Month			Running 12 Month		
2020	2021	2022	2020	2021	2022	2020	2021	2022
-30.0	3.4	19.9	-30.0	3.4	19.9	-9.0	-43.8	68.0
-14.0	-6.0	11.0	-14.0	-6.0	11.0	-0.6	-40.3	54.3
-18.5	10.0	8.0	-18.5	10.0	8.0	-8.5	-5.9	8.8
7 of 7	3 of 7	5 of 7	7 of 7	3 of 7	5 of 7	7 of 7	3 of 7	5 of 7

ADR	2020			2021									2022					
	Oct	Nov	Dec	Jan	Feb	Mar	Apr	May	Jun	Jul	Aug	Sep	Oct	Nov	Dec	Jan	Feb	Mar
My Property	65.36	64.84	65.07	65.65	65.89	75.29	84.15	95.18	105.03	118.37	115.11	89.48	89.02	92.07	86.09	84.78	93.48	106.95
Competitive Set	70.23	69.13	67.49	67.02	71.18	83.81	88.57	93.96	101.31	112.20	98.18	94.52	92.98	95.50	93.85	89.39	101.20	119.20
Index (ARI)	93.1	93.8	96.4	98.0	92.6	89.8	95.0	101.3	103.7	105.5	117.2	94.7	95.7	96.4	91.7	94.8	92.4	89.7
Rank	5 of 7	5 of 7	5 of 7	5 of 7	6 of 7	6 of 7	6 of 7	5 of 7	5 of 7	3 of 7	1 of 7	5 of 7	5 of 7	5 of 7	5 of 7	5 of 7	5 of 7	6 of 7

Year To Date			Running 3 Month			Running 12 Month		
2020	2021	2022	2020	2021	2022	2020	2021	2022
85.64	70.47	97.18	85.64	70.47	97.18	85.06	68.22	97.55
89.67	75.71	105.42	89.67	75.71	105.42	90.31	72.35	99.15
95.5	93.1	92.2	95.5	93.1	92.2	94.2	94.3	98.4
6 of 7	6 of 7	6 of 7	6 of 7	6 of 7	6 of 7	5 of 7	5 of 7	5 of 7

% Chg	2020			2021									2022					
	Oct	Nov	Dec	Jan	Feb	Mar	Apr	May	Jun	Jul	Aug	Sep	Oct	Nov	Dec	Jan	Feb	Mar
My Property	-18.2	-19.8	-20.0	-16.4	-25.6	-17.8	25.3	44.0	53.1	72.6	64.2	33.0	36.2	42.0	32.3	29.1	41.9	42.1
Competitive Set	-19.2	-20.0	-18.5	-21.5	-24.6	-5.1	40.4	33.3	40.1	53.3	33.3	31.6	32.4	38.1	39.1	33.4	42.2	42.2
Index (ARI)	1.3	0.1	-1.9	6.5	-1.4	-13.4	-10.7	8.1	9.3	12.6	23.2	1.1	2.9	2.8	-4.9	-3.2	-0.2	-0.1
Rank	4 of 7	3 of 7	3 of 7	3 of 7	4 of 7	6 of 7	4 of 7	1 of 7	1 of 7	1 of 7	1 of 7	3 of 7	3 of 7	4 of 7	5 of 7	4 of 7	3 of 7	3 of 7

Year To Date			Running 3 Month			Running 12 Month		
2020	2021	2022	2020	2021	2022	2020	2021	2022
-4.4	-17.7	37.9	-4.4	-17.7	37.9	-3.5	-19.8	43.0
-4.7	-15.6	39.2	-4.7	-15.6	39.2	-1.6	-19.9	37.0
0.3	-2.5	-1.0	0.3	-2.5	-1.0	-2.0	0.1	4.3
4 of 7	4 of 7	3 of 7	4 of 7	4 of 7	3 of 7	6 of 7	4 of 7	2 of 7

RevPAR	2020			2021									2022					
	Oct	Nov	Dec	Jan	Feb	Mar	Apr	May	Jun	Jul	Aug	Sep	Oct	Nov	Dec	Jan	Feb	Mar
My Property	23.40	20.51	19.68	16.84	30.05	48.88	48.60	54.19	63.41	87.03	52.58	57.53	44.22	48.58	46.68	30.87	53.95	75.40
Competitive Set	32.59	30.92	31.22	30.11	40.84	64.63	60.75	61.36	76.13	86.61	60.41	59.65	61.32	63.13	61.21	46.43	69.29	94.48
Index (RGI)	71.8	66.3	63.0	55.9	73.6	75.6	80.0	88.3	83.3	100.5	87.0	96.4	72.1	77.0	76.3	66.5	77.9	79.8
Rank	6 of 7	6 of 7	6 of 7	6 of 7	7 of 7	6 of 7	6 of 7	6 of 7	6 of 7	5 of 7	5 of 7	5 of 7	6 of 7	6 of 7	5 of 7	5 of 7	5 of 7	6 of 7

Year To Date			Running 3 Month			Running 12 Month		
2020	2021	2022	2020	2021	2022	2020	2021	2022
37.61	31.99	52.89	37.61	31.99	52.89	50.99	22.97	55.16
57.14	45.34	70.09	57.14	45.34	70.09	65.99	31.55	66.73
65.8	70.5	75.5	65.8	70.5	75.5	77.3	72.8	82.7
6 of 7	7 of 7	6 of 7	6 of 7	7 of 7	6 of 7	6 of 7	6 of 7	6 of 7

% Chg	2020			2021									2022					
	Oct	Nov	Dec	Jan	Feb	Mar	Apr	May	Jun	Jul	Aug	Sep	Oct	Nov	Dec	Jan	Feb	Mar
My Property	-53.0	-56.2	-56.1	-53.0	-45.2	110.0	567.3	294.2	136.7	291.0	119.5	156.6	89.0	136.9	137.1	83.3	79.5	54.3
Competitive Set	-51.5	-51.6	-48.4	-46.2	-46.4	57.3	546.3	232.6	160.9	206.3	106.3	76.0	88.2	104.2	96.0	54.2	69.7	46.2
Index (RGI)	-3.2	-9.7	-14.9	-12.6	2.3	33.5	3.2	18.5	-9.3	27.7	6.4	45.7	0.4	16.0	21.0	18.9	5.8	5.5
Rank	4 of 7	4 of 7	4 of 7	5 of 7	4 of 7	1 of 7	4 of 7	5 of 7	5 of 7	5 of 7	4 of 7	2 of 7	5 of 7	4 of 7	3 of 7	2 of 7	3 of 7	3 of 7

Year To Date			Running 3 Month			Running 12 Month		
2020	2021	2022	2020	2021	2022	2020	2021	2022
-33.0	-14.9	65.4	-33.0	-14.9	65.4	-12.3	-55.0	140.2
-18.0	-20.7	54.6	-18.0	-20.7	54.6	-2.2	-52.2	111.5
-18.3	7.2	7.0	-18.3	7.2	7.0	-10.3	-5.8	13.6
7 of 7	3 of 7	3 of 7	7 of 7	3 of 7	3 of 7	7 of 7	3 of 7	4 of 7

2022 © CoStar Group. This STR Report is a publication of STR, LLC and STR Global, Ltd., CoStar Group companies, and is intended solely for use by paid subscribers. The information in the STR Report is provided on an "as is" and "as available" basis and should not be construed as investment, tax, accounting or legal advice. Reproduction or distribution of this STR Report, in whole or part, without written permission is prohibited and subject to legal action. If you have received this report and are NOT a subscriber to this STR Report, please contact us immediately. Source: 2022 STR, LLC / STR Global, Ltd. trading as "STR".

# Tab 5 - Response Report

La Quinta Inns & Suites San Antonio Airport 850 Halm Blvd San Antonio, TX 78216 Phone: (210) 342-3738  
 STR # 43970 ChainID: 53411 MgtCo: Highgate Hotels Owner: Highgate Hotels  
 For the Month of: March 2022 Date Created: April 19, 2022

## This Year

Mar 17th - St. Patrick's Day

## March 2022 (This Year)

Sun	Mon	Tue	Wed	Thu	Fri	Sat
		1	2	3	4	5
6	7	8	9	10	11	12
13	14	15	16	17	18	19
20	21	22	23	24	25	26
27	28	29	30	31		

## March 2021 (Last Year)

Sun	Mon	Tue	Wed	Thu	Fri	Sat
	1	2	3	4	5	6
7	8	9	10	11	12	13
14	15	16	17	18	19	20
21	22	23	24	25	26	27
28	29	30	31			

## Last Year

Mar 17th - St. Patrick's Day

Mar 28th - First Day of Passover

STR#	Name	City, State	Zip	Phone	Rooms	Open Date
43970	La Quinta Inns & Suites San Antonio Airport	San Antonio, TX	78216	(210) 342-3738	276	200201
19458	Drury Plaza Hotel San Antonio Airport	San Antonio, TX	78216	(210) 308-8100	270	199207
21472	Fairfield Inn & Suites San Antonio Airport North St	San Antonio, TX	78216	(210) 530-9899	120	199601
30137	Holiday Inn Express San Antonio Airport	San Antonio, TX	78216	(210) 308-6700	150	199406
31372	Red Roof Inn San Antonio Airport	San Antonio, TX	78216	(210) 340-4055	135	199601
34135	Hyatt Place San Antonio Airport/Quarry Market	San Antonio, TX	78216	(210) 930-2333	126	199611
58550	Hilton Garden Inn San Antonio Airport South	San Antonio, TX	78217	(210) 822-1554	126	200812
					1203	

2020												2021												2022		
Apr	May	Jun	Jul	Aug	Sep	Oct	Nov	Dec	Jan	Feb	Mar	Apr	May	Jun	Jul	Aug	Sep	Oct	Nov	Dec	Jan	Feb	Mar			
●	●	●	●	●	●	●	●	●	●	●	●	●	●	●	●	●	●	●	●	●	●	●	●	○	●	●
●	●	●	●	●	●	●	●	●	●	●	●	●	●	●	●	●	●	●	●	●	●	●	●	●	●	●
●	●	●	●	●	●	●	●	●	●	●	●	●	●	●	●	●	●	●	●	●	●	●	●	●	●	●
●	●	●	●	●	●	●	●	●	●	●	●	●	●	●	●	●	●	●	●	●	●	●	●	●	●	●
●	●	●	●	●	●	●	●	●	●	●	●	●	●	●	●	●	●	●	●	●	●	●	●	●	●	●
●	●	●	●	●	●	●	●	●	●	●	●	●	●	●	●	●	●	●	●	●	●	●	●	●	●	●
●	●	●	●	●	●	●	●	●	●	●	●	●	●	●	●	●	●	●	●	●	●	●	●	●	●	●
○	●	●	●	●	●	●	●	●	●	●	●	●	●	●	●	●	●	●	●	●	●	●	●	●	●	●

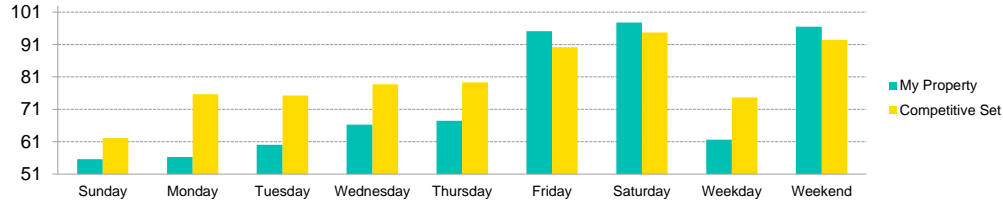
Data received:

- = Monthly Only
- = Monthly & Daily

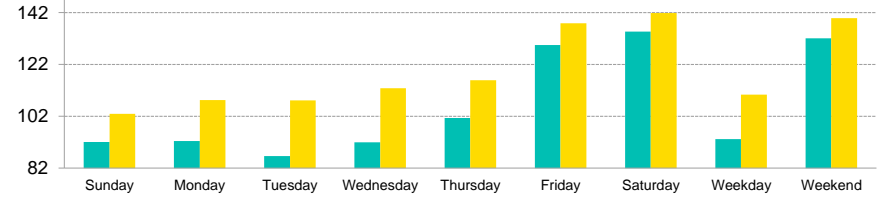
# Tab 6 - Day of Week and Weekday/Weekend Report

La Quinta Inns & Suites San Antonio Airport 850 Halm Blvd San Antonio, TX 78216 Phone: (210) 342-3738  
 STR # 43970 ChainID: 53411 MgtCo: Highgate Hotels Owner: Highgate Hotels  
 For the Month of: March 2022 Date Created: April 19, 2022 Monthly Competitive Set Data Excludes Subject Property

### Current Month Occupancy



### Current Month ADR

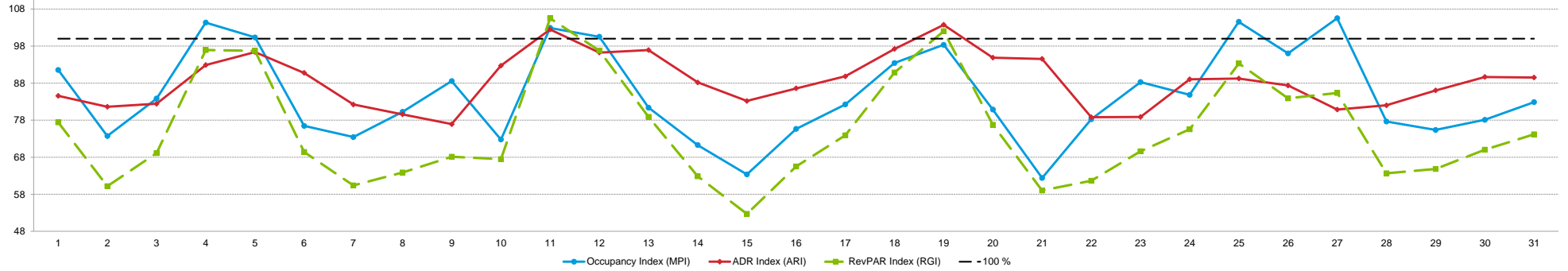


Day of Week	Time Period	Occupancy (%)			Average Daily Rate			RevPAR											
		My Property	Competitive Set	Index (MPI)	My Property	Competitive Set	Index (ARI)	My Property	Competitive Set	Index (RGI)									
Sunday	Current Month	55.6	3.5	62.1	-3.4	89.6	7.2	92.12	30.3	102.89	32.5	89.5	-1.6	51.23	34.9	63.91	27.9	80.2	5.5
	Year To Date	43.6	22.1	51.5	-2.2	84.6	24.8	85.99	27.7	93.62	32.2	91.9	-3.4	37.49	56.0	48.25	29.3	77.7	20.6
	Running 3 Month	43.6	22.1	51.5	-2.2	84.6	24.8	85.99	27.7	93.62	32.2	91.9	-3.4	37.49	56.0	48.25	29.3	77.7	20.6
	Running 12 Month	47.3	72.8	56.5	32.3	83.8	30.6	89.28	33.2	90.63	30.2	98.5	2.4	42.24	130.2	51.19	72.2	82.5	33.7
Monday	Current Month	56.3	2.1	75.6	5.8	74.4	-3.5	92.40	33.0	108.29	39.2	85.3	-4.4	52.02	35.8	81.89	47.2	63.5	-7.7
	Year To Date	44.7	8.3	59.5	-1.5	75.0	9.9	86.08	25.5	97.61	32.4	88.2	-5.2	38.44	35.9	58.12	30.5	66.1	4.1
	Running 3 Month	44.7	8.3	59.5	-1.5	75.0	9.9	86.08	25.5	97.61	32.4	88.2	-5.2	38.44	35.9	58.12	30.5	66.1	4.1
	Running 12 Month	47.1	50.5	59.4	33.4	79.3	12.9	85.58	27.9	91.65	27.8	93.4	0.0	40.32	92.5	54.46	70.5	74.0	12.9
Tuesday	Current Month	60.1	-2.1	75.3	4.1	79.8	-6.0	86.65	22.2	108.17	33.7	80.1	-8.6	52.06	19.6	81.45	39.2	63.9	-14.1
	Year To Date	49.5	11.5	64.4	8.4	76.8	2.9	84.32	22.5	100.48	34.1	83.9	-8.7	41.73	36.6	64.74	45.4	64.4	-6.1
	Running 3 Month	49.5	11.5	64.4	8.4	76.8	2.9	84.32	22.5	100.48	34.1	83.9	-8.7	41.73	36.6	64.74	45.4	64.4	-6.1
	Running 12 Month	50.3	55.9	62.4	42.1	80.6	9.7	86.29	28.3	93.81	28.9	92.0	-0.5	43.40	100.1	58.54	83.2	74.1	9.2
Wednesday	Current Month	66.3	5.3	78.7	5.0	84.2	0.3	91.94	32.5	112.83	39.5	81.5	-5.0	60.94	39.4	88.85	46.4	68.6	-4.8
	Year To Date	55.5	19.7	69.3	12.7	80.1	6.2	87.48	29.2	102.64	36.9	85.2	-5.6	48.56	54.7	71.11	54.3	68.3	0.2
	Running 3 Month	55.5	19.7	69.3	12.7	80.1	6.2	87.48	29.2	102.64	36.9	85.2	-5.6	48.56	54.7	71.11	54.3	68.3	0.2
	Running 12 Month	54.1	59.7	66.2	43.7	81.7	11.1	86.89	28.7	94.90	29.4	91.6	-0.5	47.01	105.6	62.81	85.9	74.8	10.6
Thursday	Current Month	67.4	-2.2	79.3	4.0	85.0	-6.0	101.37	52.0	115.92	43.2	87.5	6.1	68.37	48.7	91.93	49.0	74.4	-0.2
	Year To Date	57.5	19.0	70.3	17.5	81.7	1.3	92.06	41.5	104.55	39.6	88.1	1.3	52.90	68.4	73.50	64.1	72.0	2.6
	Running 3 Month	57.5	19.0	70.3	17.5	81.7	1.3	92.06	41.5	104.55	39.6	88.1	1.3	52.90	68.4	73.50	64.1	72.0	2.6
	Running 12 Month	57.3	70.7	67.3	60.0	85.2	6.7	88.50	33.2	95.25	31.6	92.9	1.3	50.75	127.4	64.14	110.5	79.1	8.0
Friday	Current Month	95.2	29.7	90.2	0.7	105.5	28.8	129.50	48.4	137.83	51.1	94.0	-1.8	123.23	92.4	124.30	52.2	99.1	26.5
	Year To Date	66.0	34.1	74.9	21.2	88.1	10.7	114.93	52.0	116.44	46.5	98.7	3.7	75.91	103.8	87.26	77.6	87.0	14.8
	Running 3 Month	66.0	34.1	74.9	21.2	88.1	10.7	114.93	52.0	116.44	46.5	98.7	3.7	75.91	103.8	87.26	77.6	87.0	14.8
	Running 12 Month	66.8	82.9	77.3	86.8	86.5	-2.1	114.14	62.4	108.88	48.8	104.8	9.1	76.27	197.0	84.12	178.0	90.7	6.8
Saturday	Current Month	97.8	18.2	94.7	0.7	103.2	17.4	134.63	50.6	141.83	49.9	94.9	0.5	131.63	78.1	134.34	50.9	98.0	18.0
	Year To Date	65.2	23.9	76.0	19.6	85.8	3.6	118.03	51.9	116.96	46.0	100.9	4.1	77.01	88.2	88.95	74.6	86.6	7.8
	Running 3 Month	65.2	23.9	76.0	19.6	85.8	3.6	118.03	51.9	116.96	46.0	100.9	4.1	77.01	88.2	88.95	74.6	86.6	7.8
	Running 12 Month	72.8	78.9	82.0	84.0	88.9	-2.8	118.35	67.0	112.06	52.8	105.6	9.3	86.21	198.7	91.87	181.2	93.8	6.2
Weekday/Weekend	Current Month	61.6	2.1	74.7	3.7	82.5	-1.6	93.16	34.2	110.28	38.3	84.5	-2.9	57.38	37.0	82.36	43.4	69.7	-4.5
	Year To Date	50.1	16.3	63.0	7.3	79.6	8.4	87.39	29.5	100.20	35.5	87.2	-4.5	43.81	50.5	63.14	45.4	69.4	3.5
	Running 3 Month	50.1	16.3	63.0	7.3	79.6	8.4	87.39	29.5	100.20	35.5	87.2	-4.5	43.81	50.5	63.14	45.4	69.4	3.5
	Running 12 Month	51.3	61.7	62.4	42.2	82.2	13.7	87.34	30.3	93.37	29.7	93.5	0.5	44.77	110.7	58.25	84.4	76.8	14.3
Weekend (Fri-Sat)	Current Month	96.5	23.6	92.4	0.7	104.3	22.8	132.10	49.4	139.88	50.4	94.4	-0.7	127.43	84.7	129.32	51.5	98.5	21.9
	Year To Date	65.6	28.8	75.5	20.4	86.9	7.0	116.53	52.0	116.71	46.3	99.8	3.9	76.48	95.7	88.14	76.1	86.8	11.1
	Running 3 Month	65.6	28.8	75.5	20.4	86.9	7.0	116.53	52.0	116.71	46.3	99.8	3.9	76.48	95.7	88.14	76.1	86.8	11.1
	Running 12 Month	69.8	80.8	79.6	85.4	87.7	-2.5	116.34	64.8	110.52	50.9	105.3	9.2	81.24	197.9	87.99	179.6	92.3	6.5
Total	Current Month	70.5	8.6	79.3	2.8	89.0	5.6	106.95	42.1	119.20	42.2	89.7	-0.1	75.40	54.3	94.48	46.2	79.8	5.5
	Year To Date	54.4	19.9	66.5	11.0	81.8	8.0	97.18	37.9	105.42	39.2	92.2	-1.0	52.89	65.4	70.09	54.6	75.5	7.0
	Running 3 Month	54.4	19.9	66.5	11.0	81.8	8.0	97.18	37.9	105.42	39.2	92.2	-1.0	52.89	65.4	70.09	54.6	75.5	7.0
	Running 12 Month	56.5	68.0	67.3	54.3	84.0	8.8	97.55	43.0	99.15	37.0	98.4	4.3	55.16	140.2	66.73	111.5	82.7	13.6

Tab 7 - Daily Data for the Month

La Quinta Inns & Suites San Antonio Airport 850 Halm Blvd San Antonio, TX 78216 Phone: (210) 342-3738  
 STR # 43970 ChainID: 53411 MgtCo: Highgate Hotels Owner: Highgate Hotels  
 For the Month of: March 2022 Date Created: April 19, 2022 Daily Competitive Set Data Excludes Subject Property

Daily Indexes for the Month of March



	Tu	We	Th	Fr	Sa	Su	Mo	Tu	We	Th	Fr	Sa	Su	Mo	Tu	We	Th	Fr	Sa	Su	Mo	Tu	We	Th	Fr	Sa	Su	Mo	Tu	We	Th
<b>Occupancy (%)</b>	<b>March</b>																														
My Property	54.7	51.4	61.6	88.0	86.6	40.6	49.3	55.1	64.5	53.6	90.9	94.6	63.0	66.7	61.2	71.7	79.0	92.0	94.2	42.8	39.9	52.2	63.0	61.6	80.4	85.9	59.4	52.2	54.0	55.4	55.4
Competitive Set	59.8	69.8	73.5	84.4	86.3	53.1	67.1	68.6	72.8	73.7	88.3	94.1	77.5	93.5	96.7	94.8	96.0	63.9	95.8	52.9	63.9	66.7	71.4	72.6	76.9	89.4	56.3	67.2	71.6	66.9	
Index (MPI)	91.5	73.7	83.8	104.4	100.3	76.5	73.4	80.3	88.6	72.8	102.9	100.5	81.4	71.3	63.4	75.7	82.3	93.4	98.3	80.9	62.4	78.3	88.3	84.8	104.6	96.0	105.5	77.6	75.4	78.1	82.9

	Tu	We	Th	Fr	Sa	Su	Mo	Tu	We	Th	Fr	Sa	Su	Mo	Tu	We	Th	Fr	Sa	Su	Mo	Tu	We	Th	Fr	Sa	Su	Mo	Tu	We	Th
<b>% Chg</b>	<b>March</b>																														
My Property	2.0	-11.8	0.6	13.0	13.3	-28.2	-11.7	-9.0	-3.3	-28.2	25.5	-1.5	-1.7	-6.6	-29.0	-17.8	3.3	26.4	18.2	-24.4	-29.5	-20.9	-3.9	-11.9	3.7	-0.4	37.8	15.2	13.7	25.4	-8.4
Competitive Set	5.3	25.6	48.5	31.2	21.1	-0.5	4.2	7.6	-2.0	-0.4	-6.1	-2.7	6.6	4.5	1.6	-1.4	-0.9	0.3	-1.9	-13.5	-4.2	3.3	0.3	0.0	-12.1	-6.7	-6.1	11.6	6.8	12.5	-6.9
Index (MPI)	-3.1	-29.8	-32.3	-13.8	-6.4	-27.9	-15.2	-15.4	-1.3	-27.9	33.6	1.2	-7.7	-10.7	-30.1	-16.7	4.3	28.0	20.5	-12.6	-26.4	-23.4	-4.2	-11.9	18.1	6.7	46.8	3.2	6.5	11.5	-1.6

	Tu	We	Th	Fr	Sa	Su	Mo	Tu	We	Th	Fr	Sa	Su	Mo	Tu	We	Th	Fr	Sa	Su	Mo	Tu	We	Th	Fr	Sa	Su	Mo	Tu	We	Th
<b>ADR</b>	<b>March</b>																														
My Property	81.79	79.81	82.78	105.94	110.69	86.47	80.70	81.05	84.99	102.40	141.89	141.18	111.39	113.62	107.66	119.11	127.60	158.31	167.48	93.62	93.71	78.60	83.75	97.98	115.34	122.35	77.81	79.81	87.05	91.43	94.72
Competitive Set	96.70	97.78	100.43	114.05	114.81	95.24	98.16	101.85	110.50	110.43	138.43	146.65	114.92	128.85	129.42	137.54	142.05	162.83	161.41	98.67	99.11	99.78	106.21	110.02	129.23	140.04	96.21	97.33	101.18	101.95	105.82
Index (ARI)	84.6	81.6	82.4	92.9	96.4	90.8	82.2	79.6	76.9	92.7	102.5	96.3	96.9	88.2	83.2	86.6	89.8	97.2	103.8	94.9	94.6	78.8	78.9	89.1	89.3	87.4	80.9	82.0	86.0	89.7	89.5

	Tu	We	Th	Fr	Sa	Su	Mo	Tu	We	Th	Fr	Sa	Su	Mo	Tu	We	Th	Fr	Sa	Su	Mo	Tu	We	Th	Fr	Sa	Su	Mo	Tu	We	Th
<b>% Chg</b>	<b>March</b>																														
My Property	29.6	32.3	42.5	38.9	65.1	48.2	29.4	32.2	42.5	71.0	88.3	68.8	58.0	55.2	41.3	60.9	73.2	59.6	59.9	26.3	41.8	12.6	21.0	44.8	27.9	30.9	5.7	4.8	18.1	20.5	22.5
Competitive Set	32.0	35.7	38.3	55.8	51.6	33.8	33.6	34.9	47.7	52.4	51.9	56.9	39.9	52.3	43.8	50.7	58.5	64.4	56.4	30.5	32.4	27.0	35.5	39.1	42.4	45.5	27.1	29.4	33.1	33.6	30.4
Index (ARI)	-1.8	-2.5	3.0	-10.8	8.8	10.7	-3.2	-1.9	-3.5	12.2	24.0	7.6	12.9	1.9	-1.7	6.8	9.2	-2.9	2.2	-3.3	7.1	-11.3	-10.8	4.1	-10.2	-10.1	-16.9	-19.1	-11.2	-9.8	-6.0

	Tu	We	Th	Fr	Sa	Su	Mo	Tu	We	Th	Fr	Sa	Su	Mo	Tu	We	Th	Fr	Sa	Su	Mo	Tu	We	Th	Fr	Sa	Su	Mo	Tu	We	Th
<b>RevPAR</b>	<b>March</b>																														
My Property	44.75	41.06	50.99	93.28	95.85	35.09	39.77	44.64	54.81	54.91	129.03	133.51	70.23	75.74	65.92	85.45	100.79	145.69	157.77	40.03	37.35	41.01	52.80	60.35	92.77	105.06	46.23	41.64	46.99	50.69	52.51
Competitive Set	57.79	68.24	73.78	96.21	99.08	50.55	65.86	69.88	80.46	81.37	122.31	137.95	89.01	120.51	125.09	130.42	136.38	160.37	154.62	52.16	63.29	66.52	75.85	79.88	99.39	125.24	54.18	65.41	72.47	72.37	70.78
Index (RGI)	77.4	60.2	69.1	96.9	96.7	69.4	60.4	63.9	68.1	67.5	105.5	96.8	78.9	62.9	52.7	65.5	73.9	90.8	102.0	76.7	59.0	61.6	69.6	75.6	93.3	83.9	85.3	63.7	64.8	70.0	74.2

	Tu	We	Th	Fr	Sa	Su	Mo	Tu	We	Th	Fr	Sa	Su	Mo	Tu	We	Th	Fr	Sa	Su	Mo	Tu	We	Th	Fr	Sa	Su	Mo	Tu	We	Th
<b>% Chg</b>	<b>March</b>																														
My Property	32.2	16.7	43.3	57.0	87.0	6.4	14.2	20.4	37.8	22.9	136.3	66.3	55.3	45.0	0.3	32.2	78.9	101.7	89.0	-4.5	0.0	-10.9	16.3	27.5	32.7	30.3	45.6	20.7	34.3	51.2	12.2
Competitive Set	38.9	70.4	105.4	104.3	83.6	33.1	39.2	45.1	44.7	51.8	42.6	52.7	49.1	59.3	46.0	48.6	57.1	65.0	53.5	13.0	26.9	31.3	36.0	39.1	25.1	35.8	19.3	44.4	42.0	50.2	21.4
Index (RGI)	-4.8	-31.5	-30.2	-23.2	1.8	-20.1	-17.9	-17.1	-4.7	-19.0	65.7	8.9	4.2	-9.0	-31.3	-11.1	13.9	22.3	23.1	-15.5	-21.2	-32.1	-14.5	-8.4	6.0	-4.1	22.0	-16.5	-5.4	0.6	-7.6

2022 © CoStar Group. This STR Report is a publication of STR, LLC and STR Global, Ltd. CoStar Group companies, and is intended solely for use by paid subscribers. The information in the STR Report is provided on an "as is" and "as available" basis and should not be construed as investment, tax, accounting or legal advice. Reproduction or distribution of this STR Report, in whole or part, without written permission is prohibited and subject to legal action. If you have received this report and are NOT a subscriber to this STR Report, please contact us immediately. Source: 2022 STR, LLC / STR Global, Ltd. trading as "STR".



## How can we assist you?

**Glossary:**

For all STR definitions, please click here or visit [www.str.com/data-insights/resources/glossary](http://www.str.com/data-insights/resources/glossary)

**Frequently Asked Questions (FAQ):**

For all STR FAQs, please click here or visit [www.str.com/data-insights/resources/FAQ](http://www.str.com/data-insights/resources/FAQ)

For additional support, please [contact](#) your regional office.

For the latest in industry news, visit [HotelNewsNow.com](http://HotelNewsNow.com).

To learn more about the Hotel Data Conference, visit [HotelDataConference.com](http://HotelDataConference.com).